

**PUREZZA™**

PREMIUM WATER

# DIM-40

Self-serve air-cooled slim-line ice dispenser.



A highly versatile self-serve ice dispenser.

Thanks to its high-quality ice production and storage capacity the DIM-40 is suitable for a wide range of applications where self-service is preferable. Recommended for hotel corridors, canteens and break rooms, vending and self-service beverage areas.

## Industry Leading



### Best-in-class ice cube

The Hoshizaki ice cube is best-in-class when it comes to slow melt time. This process provides a longer lasting chill, reduced dilution and retained flavour, thereby protecting the integrity and flavour of the drink.



### Problem free ice dispensing

With push button operation, large drip tray and ample dispense area the DIM-40 offers easy and problem free ice dispensing.



### Contamination protection

Closed water circuit technology offers the ultimate contamination protection, by reducing the number of points at which impurities can enter the ice making process.

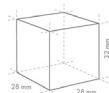


### Performance filtration

Professional grade filters are used to improve taste and reduce odours resulting in great-tasting, crystal-clear ice.

### Ice Cubes

Large (standard) 28x28x32mm



### Production Capacity

43kg / 24h

### Storage capacity

Up to 15kg



# Features

## Reliable

An easy to clean air filter allows you to carry out a routine cleaning schedule, extending product life expectancy and reducing the frequency of engineer visits.

## Smart design

Slim-line dimensions allow for ease of recessed or built-in installations, whilst the louvered front panel allows access for condensing air circulation (front intake, back exhaust).

## Hygienic

Removable door gaskets help prevent any heat and contamination from entering the bin, as well as making the machine easy to clean and maintain.

## Quiet operation

Quiet operation (<45 db) makes this dispenser ideal for hotel corridors and ice rooms.

# Technical specifications

## Dimensions

350mm (W) x 1590mm (H) x 526mm (D)

## Weight Gross / Net

70kg/ 59kg

## Power Supply

1 phase 220-240V 50Hz

## Electrical consumption (24h power factor 61%)

280W

## Refrigerant

R290/75g

# Operation requirements

## Ambient temperature

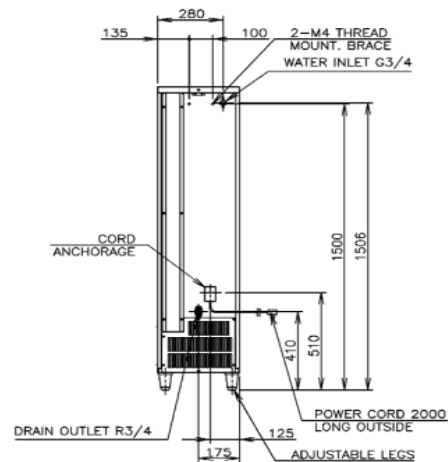
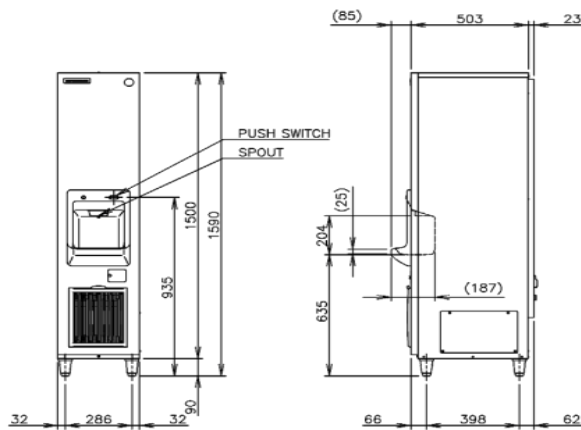
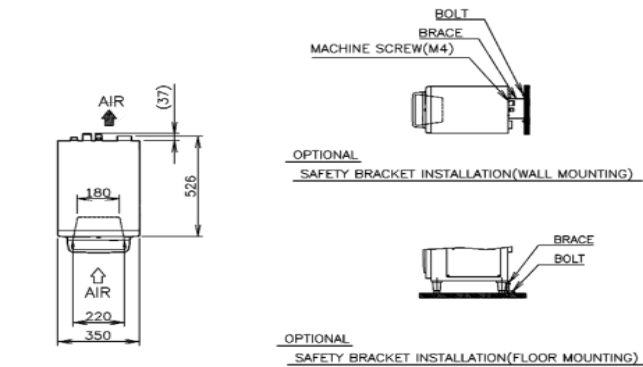
1-40°C

## Water supply temperature

5-35°C

## Water supply pressure

2.5bar



# Tested and certified



# Contact the Purezza team today

## Purezza UK

0333 323 2735

enquiries@purezza-water.co.uk

For more information, visit

[www.purezza-water.co.uk](http://www.purezza-water.co.uk)

Waterlogic International Limited reserves the right, in order to reflect continuous research and development, to amend or change specifications without prior notice.